



COMMERCIAL AFTERMARKET MOTORS

Our commercial aftermarket motor warehouse has the ability to match and deliver commercial aftermarket motors for your customer's application with direct shipping available.



BELTED BLOWER MOTORS

TOTALINE® BELTED BLOWER MOTORS THREE PHASE



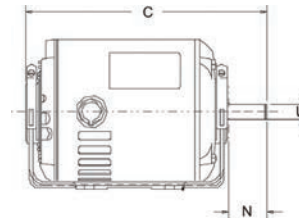
- Commercial Condenser Fan
- Open Drip-Proof, Air Over
- 56 Frame
- Ball Bearings
- Reverse Rotation
- Auto Thermal Overload Protector
- Class B
- Belly Band Mount, Flat and Keyway on Shaft

PART	HP	VOLTAGE	RPM	BRGS	AMPS	SHELL N	SHELL XI	TOTAL C	SHAFT DIA.	SHIP WT
P257-E379	1	208-230/460	1140	BALL	4.2/2.1	6.0	0.625	14.8	0.0625	27.3
P257-E380	1 1/2	208-230/460	1140	BALL	5.4/2.7	6.0	0.625	15.8	0.0625	35

TOTALINE® SPLIT PHASE BELTED BLOWER



- Open Drip-Proof, Single Speed
- Resilient Base
- With Threaded Conduit Hole
- Reversible Rotation
- Automatic Reset Thermal Overload Protector
- Class B, 40C Motor

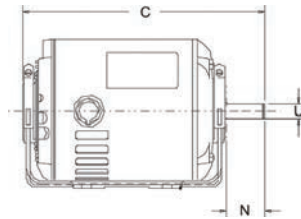


PART	HP	VOLTAGE	RPM	BRGS	AMPS	NEMA FRAME	CLASS	SHAFT N	SHAFT U	TOTAL C	SHIP WT.
P267-9305	1/4	115	1725	BALL	5.3	48	B	1.5	0.5	8.9	13
P267-9308	1/3	115	1725	SAB	5.8	48	A	1.5	0.500	8.9	18
P267-9758	1/2	115/230	1725	SAB	8.0/4.0	48	B	1.9	0.625	9.8	22

BELTED BLOWER MOTORS

NIDEC SPLIT PHASE BELTED BLOWER MOTORS

- Split Phase Belted Blower
- Open Drip-Proof



SINGLE SPEED

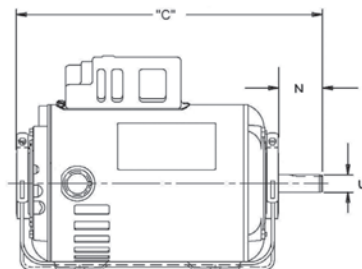
PART	HP	VOLTAGE	RPM	BRGS	AMPS	NEMA FRAME	CLASS	SHAFT N	SHAFT U	TOTAL C	SHIP WT.
4114	1/2	115/230	1725	SAB	8.0/4.0	56	B	1.9	0.625	9.8	22

TWO SPEED

PART	HP	VOLTAGE	RPM	BRGS	AMPS	NEMA FRAME	CLASS	SHAFT N	SHAFT U	TOTAL C	SHIP WT.
4293	1/2	115	1725/1140	SAB	9.2/6.0	56	A	1.9	0.625	10.8	26

NIDEC CAPACITOR START BELTED BLOWER

OPEN DRIP-PROOF, RESILIENT BASE

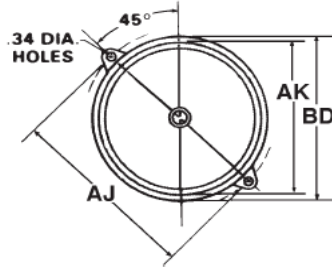


- 40°C Ambient
- Class A Insulation
- Reversible Rotation
- Suitable for All Angle
- Automatic Reset Thermal Overload Protector
- Threaded Conduit Hole

PART	HP	VOLTAGE	RPM	AMPS	ROT	THERMAL OVERLOAD PROTECTOR	CLASS	SHAFT N	SHAFT U	TOTAL C	SHIP WT.
1790	1/2	115/208-230	1725	2.4	REV	Auto	A	1.9	0.625	9.3	22
1893	3/4	115/208-230	1725	2.6	REV	Auto	A	1.9	0.625	10.8	27
1769	1	115/208-230	1725	3.1	REV	Auto	A	1.9	0.625	11.8	29

OIL BURNER MOTORS

NIDEC OIL BURNER MOTORS (60 HERTZ) SINGLE PHASE



- 40°C Ambient
- 20" Leads, Located at 3 O'clock Viewed
- From End Opposite Shaft
- 48M and 48N Flange Are Ventilated
- Bearings Have All Angle Thrust System
- Ball Bearings
- NEMA Frame 48N

PART	HP	VOLT-AGE	RPM	AMPS	ROT	THERMAL OVER-LOAD PROTECTOR	CLASS	SHAFT N	SHAFT U	TOTAL C	SHIP WT.	NOTE
3196	1/8	115	1725	2.4	Reversible	Manual	A	2.0	0.500	7.6	14	Removable Face Plate
3083	1/7	115	3450	2.6	Reversible	Manual	F	2.0	0.500	7.3	11	
3252	1/6	115	1725	3.1	Reversible	Manual	B	2.0	0.500	7.6	15	
3274	1/7	115	3450	1.7	Non-Reversible	Auto	F	2.0	0.500	7.2	11	3.7" Body, PSC motor capacitor included

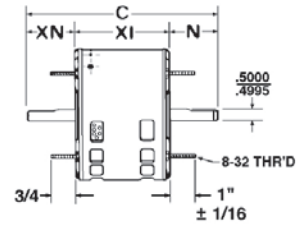
* Motor leads - 21 inches long, 18 gauge. ** Motor leads -24" long #18 50 2-conductor out shell at 11 o'clock position.

DOUBLE SHAFT FAN MOTORS

NIDEC DOUBLE SHAFT FAN MOTORS PERMANENT SPLIT CAPACITOR DOUBLE SHAFT FAN & BLOWER



- 5.6 Diameter
- Open Dripproof, Air Over
- Multi-Speed
- Hub or Stud Mount, Hub Rings are 2 1/4" Diameter, Furnished Detached with Extra Metal Rings for Adapting to 2 1/2" Diameter
- CCW Rotation Lead End
- 40°C Ambient, 60 HZ
- Class B Insulation



PART	HP	VOLTAGE	RPM	AMPS	ROT	THERMAL OVER-LOAD PROTECTOR	SHAFT N	SHAFT XN	SHELL XL	TOTAL C	SHIP WT.
NAL1016	1/6	115	1075/3	2.4	CCW LE	Auto	10	6.75	5.625	22.0	10
NA1016	1/6	208-230	1075/3	2.6	CCW LE	Auto	9	6.75	5.625	22.0	9
NA1026	1/4	208-230	1075/3	3.1	CCW LE	Auto	11	6.75	5.625	22.0	11
NA1036	1/3	208-230	1075/3		CCW LE	Auto	14	6.25	5.625	22.0	14
NA1056	1/2	208-230	1075/3		CCW LE	Auto	16	6.75	5.625	22.0	16

COMMERCIAL MOTORS

BALDOR® HVAC INTEGRAL MOTORS GENERAL PURPOSE, THREE PHASE ODP

- Heavy Gauge Steel Frame Construction
- Balanced Rotors for Reduced Vibration and Quiet Operation
- Suitable Mounting For Any Position
- Available in 1-75 HP - ask us for a quote
- Made in USA



PART	HP	VOLTAGE	PH	RPM	ENCL	FRAME
EM3116T	1	230, 460	3	1800	ODP	143T
EM3154T	1.5	230, 460	3	1800	ODP	145T
EM3154T-5	1.5	575	3	1800	ODP	145T
EM3157T	2	230, 460	3	1800	ODP	145T
EM3211T	3	230, 460	3	1800	ODP	182T
EM3218T	5	230, 460	3	1800	ODP	184T
EM3218T-8	5	230, 460	3	1800	ODP	184T
EM3311T	7.5	230, 460	3	1800	ODP	213T
EM3311T-8	7.5	200	3	1800	ODP	213T
EM3313T	10	230, 460	3	1800	ODP	215T
EM2513T	15	230,460	3	1800	ODP	254T
EM2515T	20	230,460	3	1800	ODP	256T
EM2531T	25	230,460	3	1800	ODP	284T
EM2535T	30	230,460	3	1770	ODP	286T
EM2536T	30	230,460	3	1180	ODP	326T
EM2539T	40	230,460	3	1770	ODP	324T

WITH SHAFT GROUNDING RING INSTALLED INTERNALLY (CLASS H MOTOR UP TO 40 HP)

PART	HP	VOLTAGE	PH	RPM	ENCL	FRAME
EM3211T-G	3	230, 460	3	1765	ODP	182T
EM3218T-G	5	230, 460	3	1750	ODP	184T
EM2513T-G	15	230, 460	3	1765	ODP	254T
EM2539T-G	40	230, 460	3	1800	ODP	324T

F2 MOUNT - FOOT MOUNTED

PART	HP	VOLTAGE	PH	RPM	ENCL	FRAME
EFM2513T	15	230/460	3	1800	ODP	254T
EFM2515T	20	230/460	3	1800	ODP	256T
EFM3211T	3	230/460	3	1800	ODP	182T
EFM3218T	5	208-230/460	3	1800	ODP	184T
EFM3311T	7.5	230/460	3	1800	ODP	213T
EFM3313T	10	230/460	3	1800	ODP	215T

COMMERCIAL MOTORS

BALDOR® HVAC INTEGRAL MOTORS

GENERAL PURPOSE, THREE PHASE TEFC



- Energy saving applications where continuous operation is required
- Suitable for use with inverter drives for variable torque and constant torque ratings.
- Class F Insulation
- Low-loss electrical grade lamination steel
- Made in USA

PART	HP	VOLTAGE	PH	RPM	ENCL	FRAME
EM3546T	1	230, 460	3	1800	TEFC	143T
EM3554T	1.5	230, 460	3	1800	TEFC	145T
EM3558T	2	230, 460	3	1800	TEFC	145T
EM3611T	3	230, 460	3	1800	TEFC	182T
EM3615T	5	230, 460	3	1800	TEFC	184T
EM3710T	7.5	230, 460	3	1800	TEFC	213T
EM3714T	10	230, 460	3	1800	TEFC	215T
EM2333T	15	230, 460	3	1800	TEFC	254T
EM2334T	20	230, 460	3	1800	TEFC	256T
EM4103T	25	230, 460	3	1800	TEFC	284T
EM4104T	30	230, 460	3	1800	TEFC	286T
EM4110T	40	230, 460	3	1800	TEFC	324T

WITH SHAFT GROUNDING RING INSTALLED INTERNALLY (CLASS H MOTOR UP TO 40 HP)

PART	HP	VOLTAGE	PH	RPM	ENCL	FRAME
EM3546T-G	1	230, 460	3	1800	TEFC	143T
EM3615T-G	5	230, 460	3	1800	TEFC	184T

F2 MOUNT - FOOT MOUNTED

PART	HP	VOLTAGE	PH	RPM	ENCL	FRAME
EFM3611T	3	208-230/460	3	1800	TEFC	182T
EFM 3615T	5	208-230/460	3	1800	TEFC	184T
EFM 3710T	7.5	208-230/460	3	1800	TEFC	213T

Please note that this catalog contains a sampling of our Commercial Motors offering.
Contact us for additional models and information.

*For Motor Accessories please refer to the Aftermarket Motors and Accessories Catalog Lit No. 570-648



Replacement Components
Carrier

RCHVACPARTS.COM