

# WHEN IS A CARLYLE® NOT A CARLYLE?

WHEN IT'S AN  
UNAUTHORIZED REBUILD!



## THE UNAUTHORIZED REBUILT COMPRESSOR

- May not be UL recognized
- Repaired or partially rebuilt to what specifications?
- Components reused or replaced?
- Critical parts replaced with parts that meet what standard?
- Any run testing performed?
- No warranty assurance from Carrier Corporation



## THE GENUINE CARLYLE FACTORY REMANUFACTURED COMPRESSOR

- UL recognized
- Completely remanufactured to current OEM specifications at Carlyle Stone Mountain Remanufacturing facility, utilizing genuine parts.
- All critical wearing components, rings, valves, and bearings replaced
- Cylinder walls re honed, crankshaft remachined and polished to ensure reliable performance
- Bores measured with highly sensitive air gauge
- Product quality routinely audited by Carlyle factory personnel
- All compressors are 100% run tested, under load
- Backed by Carrier Corporation service and warranty programs

FOR MORE INFORMATION ABOUT GENUINE CARLYLE REMANUFACTURED  
COMPRESSORS, OR TO FIND A DISTRIBUTOR IN YOUR AREA,  
PLEASE VISIT US ONLINE AT [WWW.CARLYLECOMPRESSOR.COM](http://WWW.CARLYLECOMPRESSOR.COM)

# GENUINE CARLYLE COMPRESSORS GIVE GOOD AS NEW, IF NOT BETTER THAN NEW PERFORMANCE

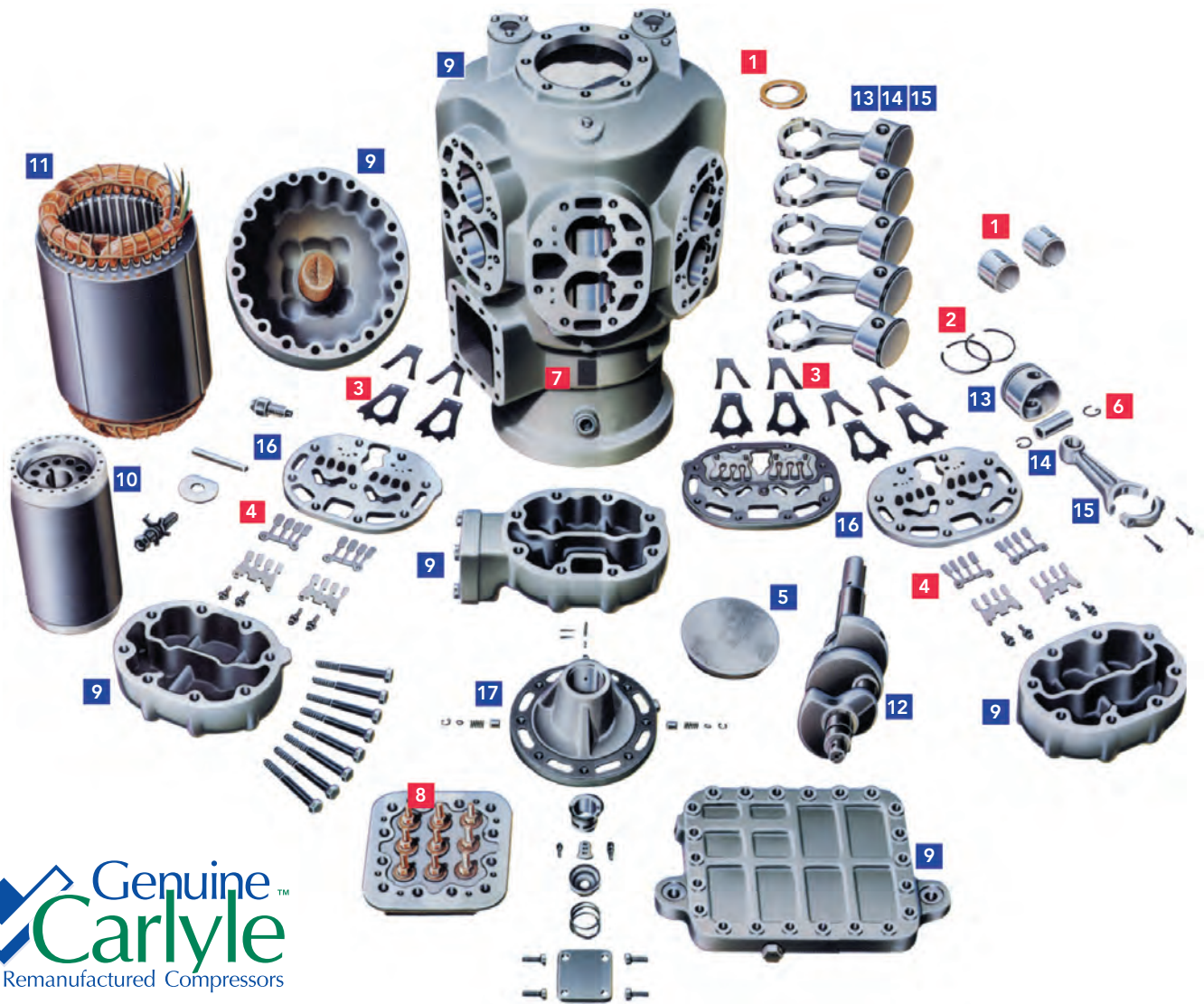
	Carlyle	Others
UL recognized?	✓	?
Completely remanufactured to current OEM specifications?	✓	No
Use of latest design specifications and genuine parts?	✓	No
Replace all critical-wearing components?	✓	?
Cylinder walls re honed, crankshaft remachined and polished?	✓	?
Cylinder and rod bores measured with highly sensitive air gauge?	✓	?
Product quality audited daily?	✓	?
All compressors are 100% run-tested under load?	✓	?
Backed by Carlyle Compressor service and warranty programs?	✓	No

\*Depending on model and A/C application.  
See your Carlyle distributor for complete details.



**SPECIFY A COMPRESSOR WITH A REPUTATION  
FOR QUALITY, DEPENDABILITY AND SAFETY...  
GENUINE CARLYLE - PROTECT YOUR REPUTATION!**

# REMANUFACTURED, NOT REBUILT!



## CRITICAL WEARING PARTS

Discarded and replaced with new, current OEM parts

- all gaskets
- 1. bearings
- 2. piston rings
- 3. & 4. suction and discharge valves
- 6. wrist pin snap rings
- 7. nameplate
- 8. electrical connections

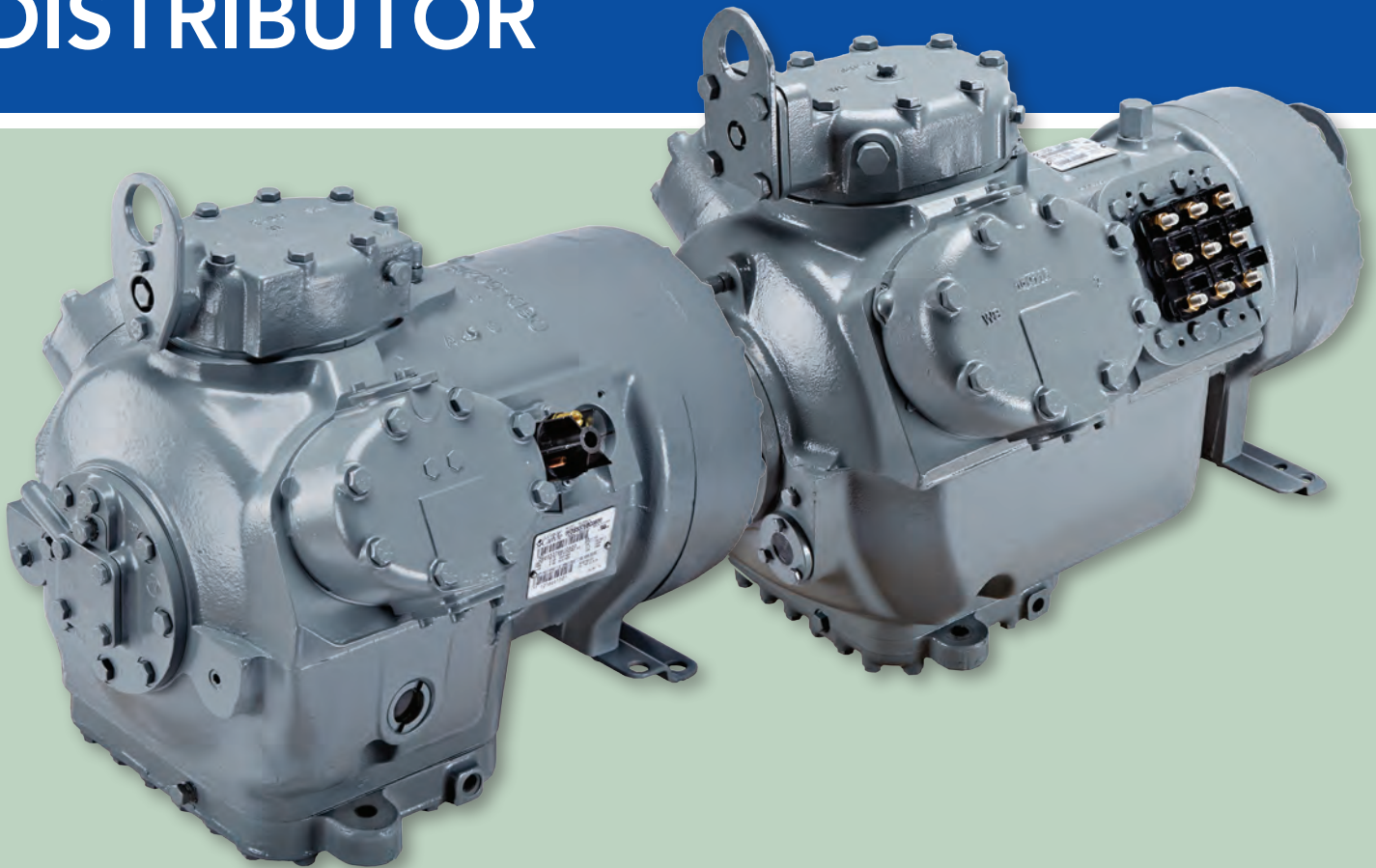
## HARD PARTS

Cleaned, measured, gaged, polished, and brought up to current OEM specification - or scrapped.

- 9. crankcase components
- 10. & 11. rotor and stator
- 12. crankshaft
- 13. pistons
- 14. wrist pins
- 15. connecting rods and straps
- 16. valve plates
- 17. pump-end bearing head



**AVAILABLE AT YOUR  
AUTHORIZED CARLYLE  
DISTRIBUTOR**



Manufacturer reserves the right to discontinue, or change at any time, specifications or designs and prices without notice and without incurring obligations.



Carlyle Compressor | P.O. Box 4808 | Syracuse, NY 13221  
[www.carlylecompressor.com](http://www.carlylecompressor.com) | 1-800-Go-Carlyle

Build your reputation on our reliability.™

570-736 Rev. 0716